

UR7e

Technical specification

The UR7e brings ultimate flexibility to medium-duty applications with a payload of up to 7.5 kg and a reach of 850 mm.

Today, more than 100,000 UR collaborative industrial robots have been delivered to customers across industries and around the world. The e-Series of cobots brings incredible flexibility and unparalleled ease of use to your application.

Updated April 2025.
Copyright © 2025 by Universal Robots A/S. All rights reserved.

Features

IP classification	IP54
Noise	< 65 dB(A)
Robot mounting	Any orientation
I/O Ports	
Digital In	2
Digital Out	2
Analog In	2
Tool I/O power supply voltage	12/24 V
Tool I/O power supply	1.5 A (Dual pin) 1 A (Single pin)

Physical

Footprint	Ø151 mm
Materials	Aluminum, plastic, steel
Tool flange interface	M8 8-pin female, EN ISO-9409-1-50-4-M6
Connector type	M8 8-pin female
Cable length (robot arm)	6 m (236 in)
Weight including cable	20.6 kg (45.4 lbs)
Humidity	≤ 90% RH (non-condensing)

Contact

Universal Robots A/S
Energivej 51
5260 Odense
Denmark

+45 89 93 89 89
sales@universal-robots.com
universal-robots.com

Teach Pendant

Features

IP classification	IP54
Humidity	≤ 90% RH (non-condensing)
Display resolution	1280 x 800 pixels

Physical

Materials	Plastic
Teach Pendant size (W x H x D)	300 mm x 231 mm x 50 mm (11.8 in x 9.1 in x 1.97 in)
Weight	1.6 kg (3.5 lbs) including 1 m of Teach Pendant cable
Cable length	4.5 m (177.17 in)

Control Box

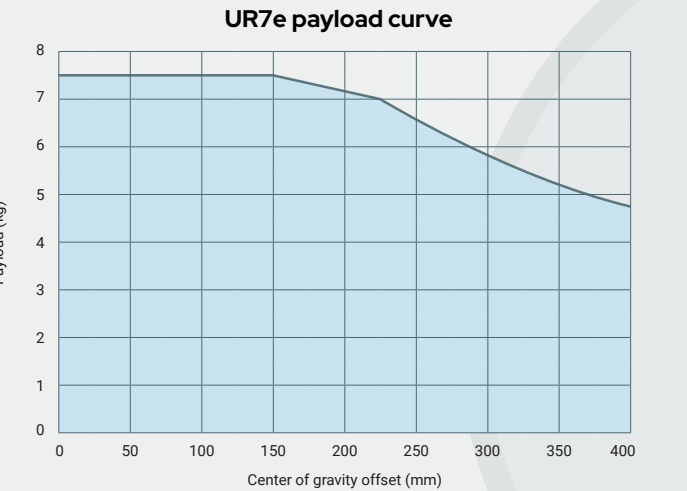
Features

IP Classification	IP44
Operating temperature range*	Ambient temperature: 0-50°C (32-122°F)
Humidity	≤ 90% RH (non-condensing)
I/O Ports	
Digital In	16
Digital Out	16
Analog In	2
Analog Out	2
Quadrature Digital Inputs	4
I/O Power Supply	24V, 2A
Industrial Protocols	Modbus-TCP (Client/Sever) Ethernet/IP Adapter PROFINET device/PROFIsafe ROS/ROS2
Hardware Interfaces	
Ethernet 1 Gb/s USB 2.0, USB 3.0 Mini DisplayPort Injection Moulding Machine Interface (SPI AN-146 & Euromap-67)	
Power Source	100-240 VAC, 47-440 Hz

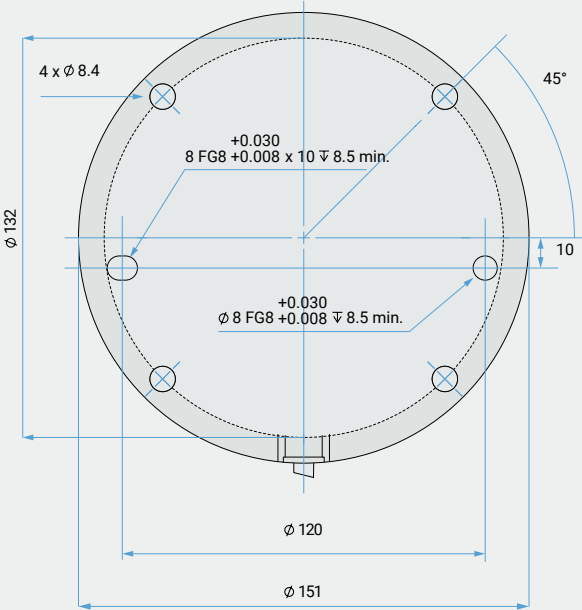
Physical

Control Box Size (W x H x D)	460 mm x 449 mm x 254 mm (18.2 in x 17.6 in x 10 in)
Weight	12 kg (26.5 lbs)
Materials	Powder coated steel

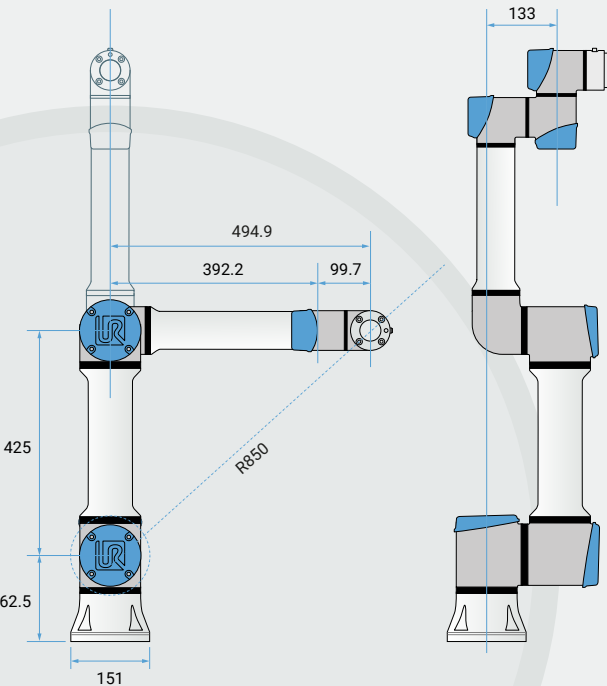
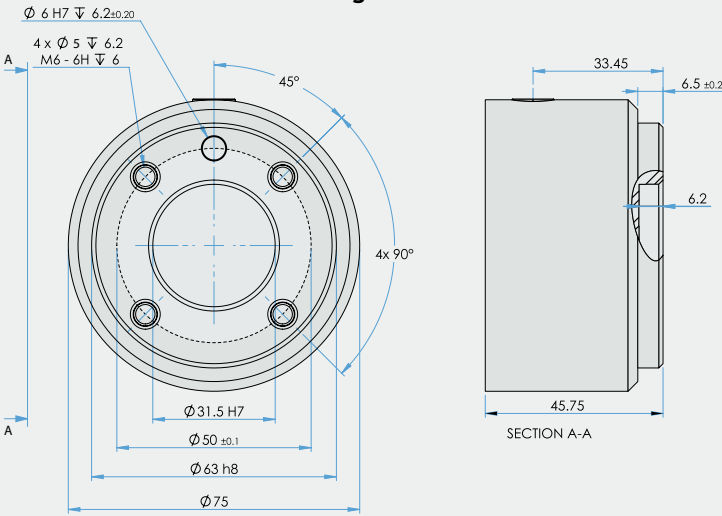
The control box is also available in an OEM version



Interface for UR7e base flange



Tool flange for UR7e



UR7e

Specification

Payload	7.5 kg (16 lbs)
Reach	850 mm (33.5 in)
Degrees of freedom	6 rotating joints
Programming	12-inch touchscreen with PolyScope graphical user interface
Power consumption (average)	
Maximum power	570 W
Moderate operating settings	250 W
Operating temperature range	Ambient temperature: 0-50°C (32-122°F)
Safety functions	
In compliance with	17 configurable safety functions EN ISO 13849-1 (PLd Category 3) and EN ISO 10218-1

Performance

Force sensing, tool flange/torque sensor	Force, x-y-z	Torque, x-y-z
Range	± 50.0 N	± 10.0 Nm
Precision	± 3.5 N	± 0.2 Nm
Accuracy	± 4.0 N	± 0.3 Nm

Movement

Max TCP speed	4 m/s	
Pose Repeatability per ISO 9283	± 0.03 mm	
Axis movement		
	Working range	Maximum speed
Base	± 360°	± 180°/s
Shoulder	± 360°	± 180°/s
Elbow	± 360°	± 180°/s
Wrist 1	± 360°	± 180°/s
Wrist 2	± 360°	± 180°/s
Wrist 3	± 360°	± 180°/s